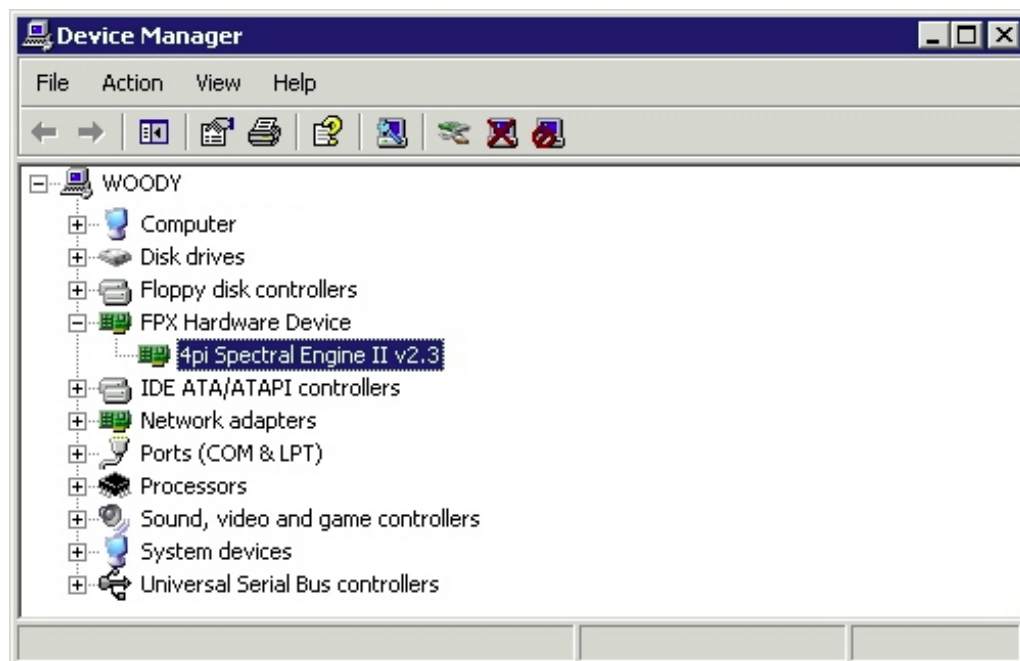


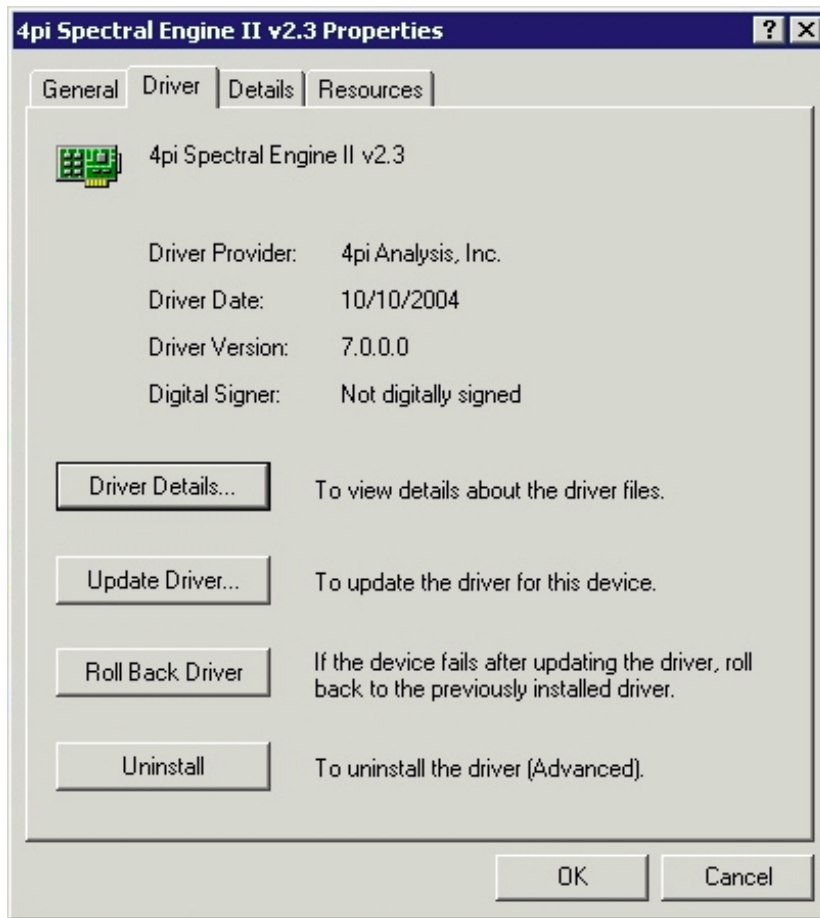
Update for the Windows 2000/XP 4pi FPXDriver

[[download this section as pdf](#)]

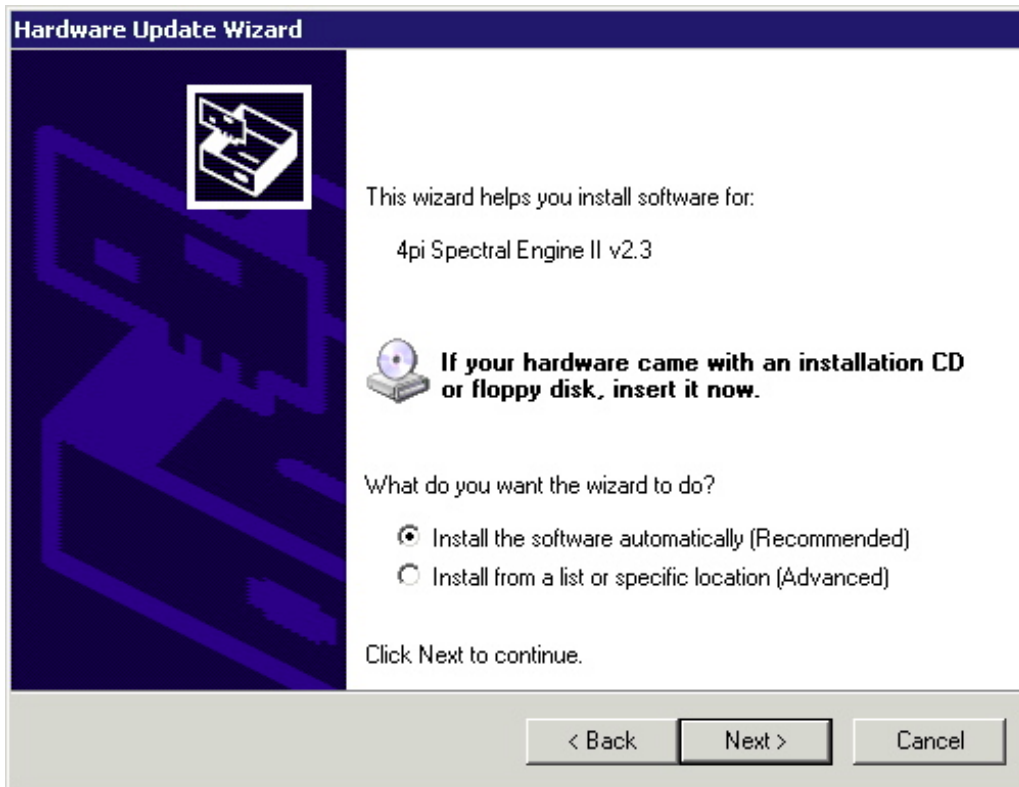
- Determine whether the required FPXDriver is on a 4pi CD-ROM or the 4pi website. If it is on the CD-ROM, insert the CD-ROM in its drive. If it is on the 4pi website, download Revolution for Windows from the 4pi web site. If you are working with a CD-ROM, locate the FPXDriver folder in the Drivers folder for future reference. If you are working with a download, expand the archive and locate the Drivers\FPXDriver folder for future reference.
- Before updating the driver, you **must** find and remove the appropriate .inf, .PNF, and .sys files. 4pi Analysis does not support any other procedure for this level of software removal. If the following procedure does not work for you, contact [4pi support](#). If necessary, you may return your computer to 4pi and we will perform the update for a fee.
- Perform the following steps to update the FPXDriver for either Win2k or XP:
 - In Win2k, Search your computer for the C:\WINNT\System32\drivers\FPXDrv.sys file and delete it.
 - In WinXP, Search your computer for the C:\WINDOWS\System32\drivers\FPXDrv.sys file and delete it.
 - Open your C:\WINNT\inf folder (Win2k) or C:\WINDOWS\inf folder (WinXP, be sure to set your folder options to show all hidden folders) and locate the numbered sequence of oem*.inf files. Open each one in a text editor to locate the one that refers to 4pi. *Important: do not open the inf files by double-clicking on them! They must be opened individually from within a text editor, or with the Open With selection in the contextual menu.* When the .inf file pertaining to 4pi is found, close it and delete the file and also its corresponding .PNF file. If more than one pair pertaining to 4pi is found, delete all copies.
 - Open the **Controls Panel** folder, open **System**, select the **Hardware** tab, and select **Device Manager...** . In the window that opens, expand the entry for FPX Hardware Device as shown below:



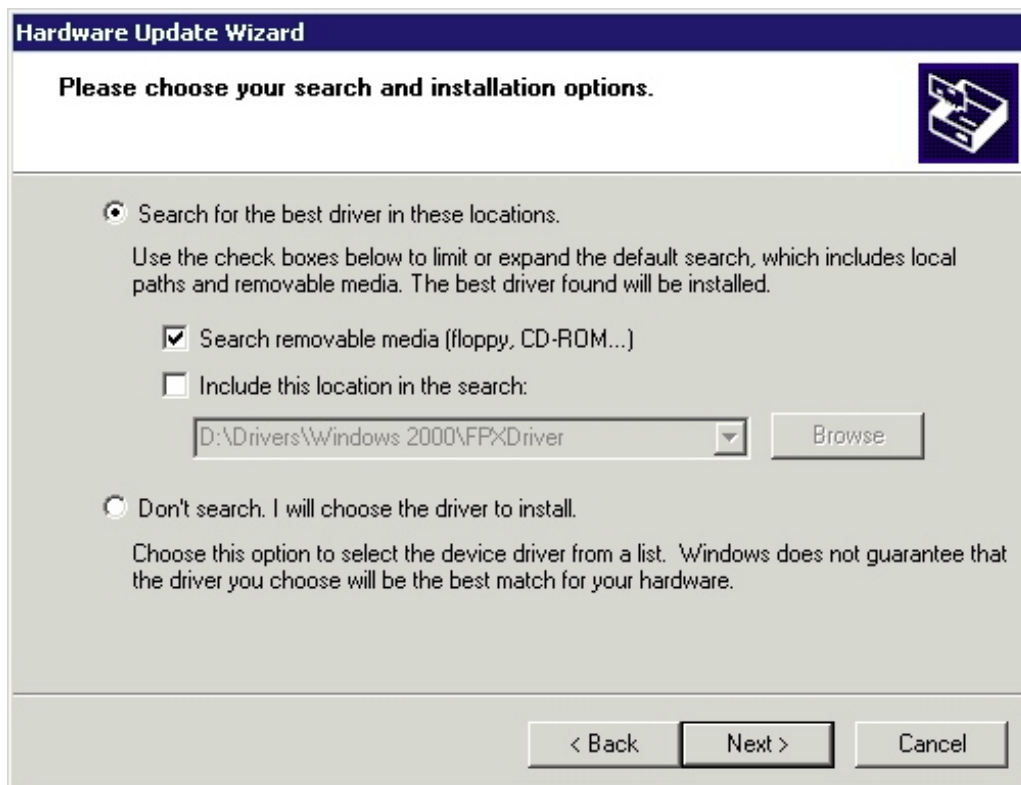
- Note: the name of your computer may not be "WOODY." Note: the version number of your Spectral Engine card may not be 2.3. Note: your device manager window may not exactly match the picture shown above. Right-click on 4pi **Spectral Engine II v2.x**, select **Properties**, and select the **Driver** tab to be presented with this window:



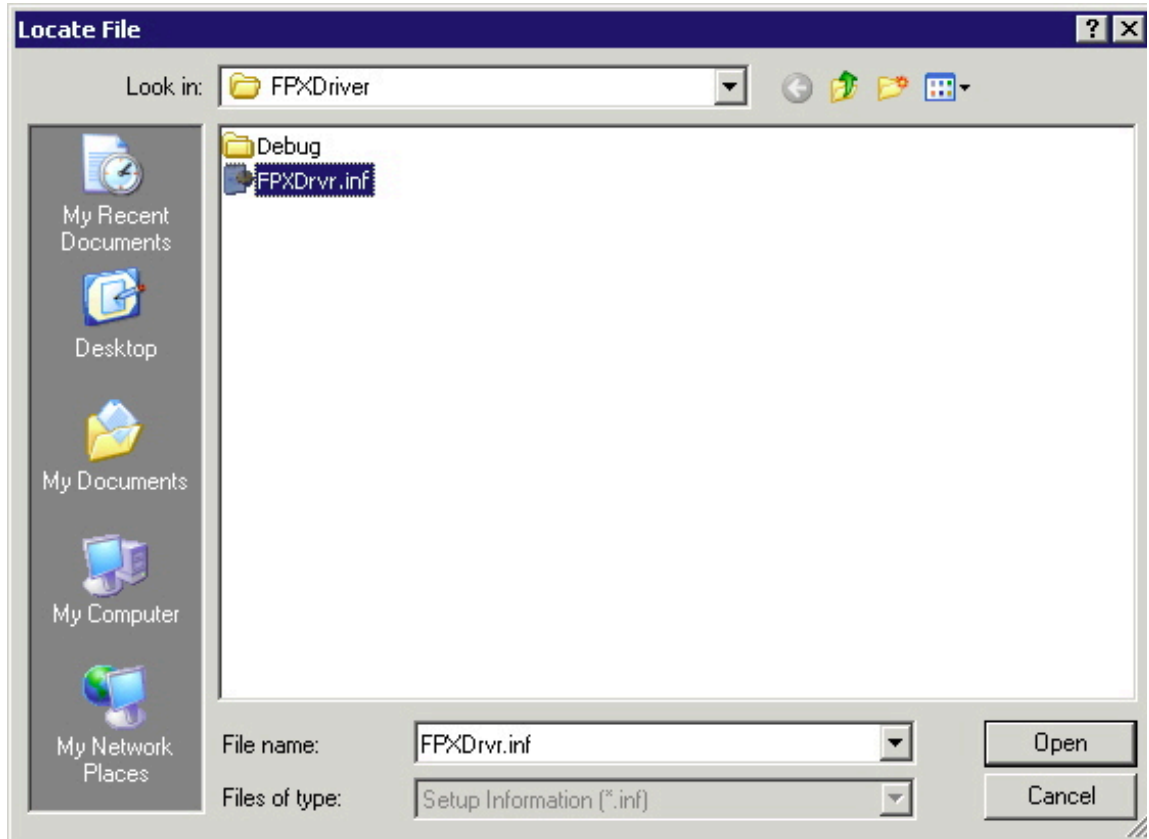
- Note: your Spectral Engine may not be v2.3 as shown above. Note: Your driver number may not be 7.0.0.0 as shown above. Click on **Update Driver** to see the initial Update Wizard window; if you see a question about connecting to Windows Update, click "no" and then click **Next** to get:



- Note: Your Spectral Engine II may not be v2.3 as shown above. Also, the Win2K and WinXP dialogs differ in places. In Win2k, Select the **Search** radio button and click **Next**. In XP, select the **install from a list or specific location** radio button. The result should be a window to **specify location** similar to:



- In Win2k, make sure only **Specify a Location** is checked, and hit **Next**. In XP, select **don't search I will choose**. In the subsequent window for Win2k, click **Browse** and find your **FPXDriver** folder on your CD-ROM or that you just downloaded. Open it and highlight the **FPXDrv.inf** file. If you are using WinXP, you will see an intermediate window describing your hardware - in this window, click the **Have Disk** button and search for the **FPXDrv.inf** file. The result for either Win2k or WinXP should be similar to:



- Click **Open** to select the inf file. Ignore any comments you see in a subsequent window, if any, about mounting a disk or missing a CD. Ignore any conclusions that you already have a driver or that a better or worse one may or may not have been found. Continue with default selections (OK, Next) until you get a Finish Window.
- Click **Finish**, which completes the driver installation. The Update Driver window will reappear with the new driver version number. Close this window to finish the update procedure. No reboot or other activation is necessary - you may begin using Revolution.