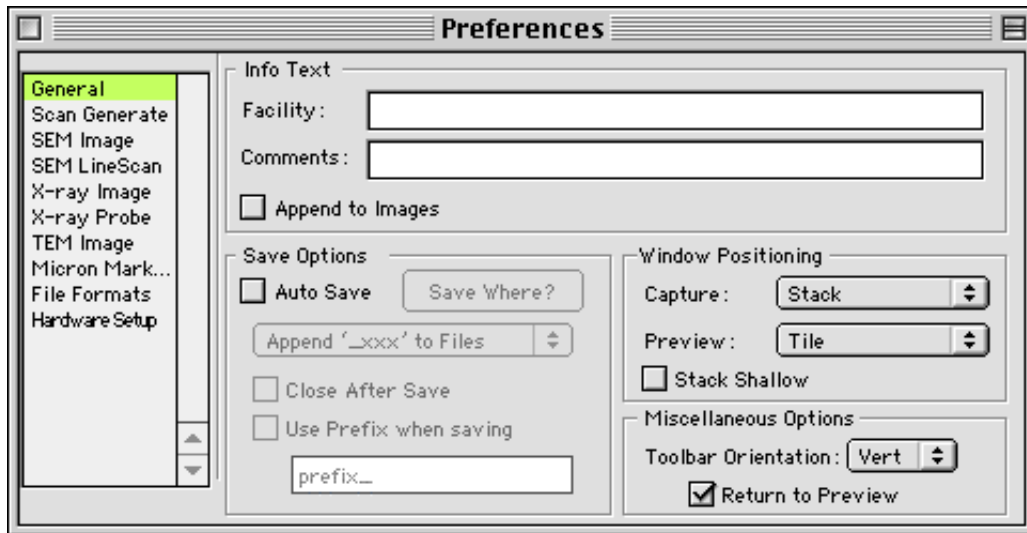


General Preferences

[\[download as pdf\]](#)

current for: v1.5.6

The General Preferences panel is shown below:



Other Preferences

- [General](#)
- [Scan Generate](#)
- [SEM Image](#)
- [SEM Linescan](#)
- [X-ray Image](#)
- [X-ray Probe](#)
- [TEM Image](#)
- [Micron Marker](#)
- [File Formats](#)
- [Hardware Setup](#)

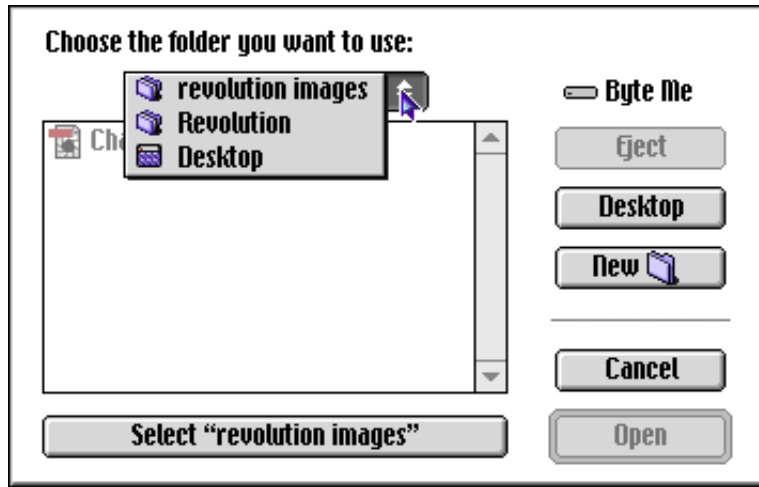
• *Info Text and Append to Images*

- **Facility.** Field to enter an optional facility name, which will appear as the top line of a three line entry below images when **Append to Images** is checked. The word "Facility" does not appear in the image, so this could be used as a general comment field if desired. The facility entry will appear only in images acquired after an entry is made, and cannot be edited in Revolution after the fact (however, it could of course be changed after the fact with any image editor).
- **Comments.** Field to enter an optional comment line, which will appear as the bottom line of a three line entry below images when **Append to Images** is checked. The comments entry will appear only in images acquired after an entry is made, but it can be edited in Revolution after the fact. Edit the line by right-clicking on the acquired or preview image and select **Edit Comments**
- **Append To Images.** Controls the creation of a blank space below a preview or acquired image, in which can appear 3 lines of information: Line 1 is the facility, as given in the Facility field above. Line 3 are comments about the image, as given in the Comments field above. Line 2 is accelerating voltage and microscope magnification. Line 2 does not appear unless **Show EM Mag** ([Micron Marker Prefs](#)) is also checked.

• *Save Options*

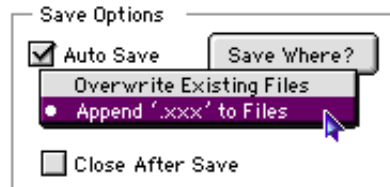
- **Auto Save.** When checked, the image acquisitions will be saved directly to disk without intervention of the operating system. When this box is unchecked, normal operating system services are used to save/dispose the image or map window. Each time Auto Save is checked, a window will open to select the save destination.
- **Save Where?** This button (unavailable unless AutoSave is checked) will open an operating system services window that allows you to browse and select a directory where your images will

be saved.



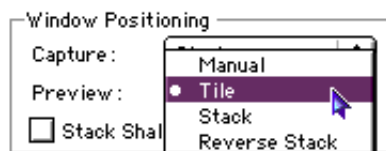
Navigate according to your operating system defaults until the desired directory is appropriately listed in the **Save Where?** window. Select the directory.

- **Close After Save.** Not available unless **AutoSave** is checked. When checked, the acquired image is immediately closed when the acquisition is finished.
- **Naming Options Menu.** Not available unless **AutoSave** is checked. The **Name** field in the [SEM Image Prefs Panel](#) or the [SEM LineScan Prefs Panel](#) is used to name the associated preview screen window, acquisition screen window, and disk file. During AutoSave operation, this dual menu selection defines the disposition of those names (for x-ray maps, the element names are set via the ROI dialogs; see the [Xray Image Prefs Panel](#) for details).



File format extensions (e.g., jpg, tif, etc.) are automatically added to the file name.

- **Overwrite Existing Files.** Overwrites the file name. Off by default. Unless the name for each acquisition is changed, each acquisition will overwrite the previous image (of the same name) saved to disk. Be careful to understand the operation of this menu before selecting, or unanticipated results can occur. Using it will definitely keep the disk from filling up, but important images can easily be lost.
 - **Append ".xxx" To Files.** When selected (default), multiple images with the same names are saved to disk as "name_001," "name_002," and so on. The "_nnn" suffixes are appended starting with the very **first** image.
- **Use Prefix When Saving.** Not available unless **AutoSave** is checked. When checked, automatically adds the given prefix to the beginning of the name.
- **Window Positioning Options**

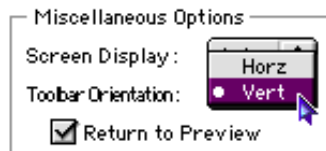


Window positioning is defined independently for preview and acquire.

- **Manual.** In **Preview** mode, if any channel's window has **never** been enabled, its window is positioned on the screen for the first time as per the **Tile** option below. If a channel's window **has** appeared before, its manually-set position is remembered for subsequent previews. This allows the user to set a favorite screen position for the image or map previews. In **Acquire** mode, channel windows that have never appeared before will be positioned on the screen for the first time as per the **Stack** option below. If a channel's window **has** appeared before, its manually-set position is remembered for subsequent acquires. This allows the user to set a favorite screen position for the image or map acquisitions. To move all windows back to their default positions after a manual adjustment, click on the menu item for positioning and the reset will occur. This is handy when a lot of windows are on the screen and the user pulls one out to get a better look. Afterwards, the menu click will put the moved window back in place.
- **Tile.** When selected, Revolution determines an optimal positioning of images on the screen so that there is no overlap. If the number or size of images or maps to be displayed is large enough that overlap is unavoidable, subsequent layers of images are stacked and tiled as appropriately as possible. The Mac version automatically leaves empty space to the right of the screen. The Windows version automatically leaves empty space to the left of the screen.
- **Stack.** When selected, Revolution stacks the images on the screen from upper left to lower right, with the **first** acquired image on top. If the number or size of images or maps to be displayed is large enough that the lower screen boundary is approached, subsequent images are tiled again on multiple columns as appropriately as possible. The Mac version automatically leaves empty space to the right of the screen. The Windows version automatically leaves empty space to the left of the screen.
- **Reverse Stack.** When selected, Revolution stacks the images on the screen from upper left to lower right, with the **last** acquired image on top. If the number or size of images or maps to be displayed is large enough that the lower screen boundary is approached, subsequent images are tiled again on multiple columns as appropriately as possible. The Mac version automatically leaves empty space to the right of the screen. The Windows version automatically leaves empty space to the left of the screen.
- **Stack Shallow.** When unchecked, Revolution stacks the images on the screen with a preference of up-down **before** left-right. When checked, the stacking has a preference of up-down **after** left-right.

- **Miscellaneous Options**

- **Toolbar Orientation.** Determines whether the multitoolbar appears in a **horizontal** or **vertical** orientation. Default is vertical.



Return to Preview determines whether the preview mode is automatically restarted after an acquisition is finished.