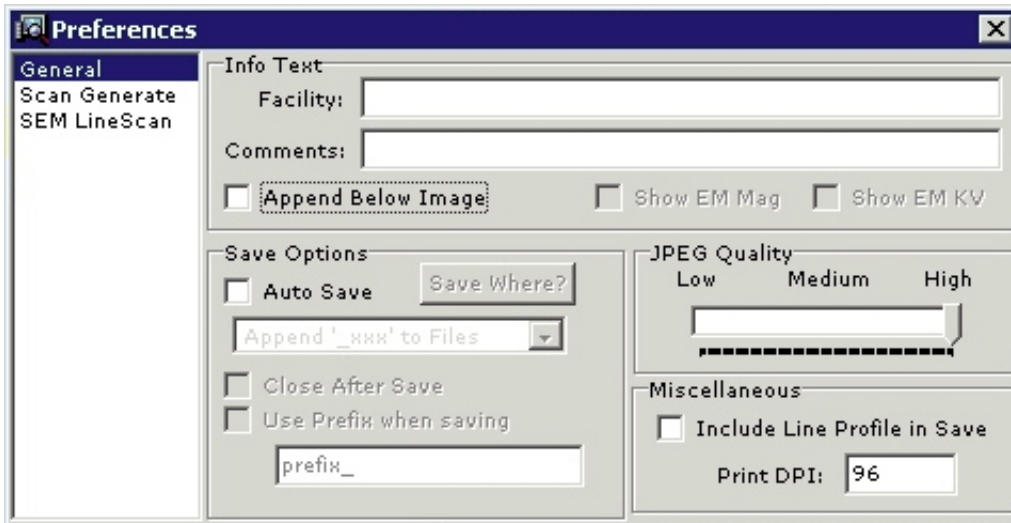


General Preferences

[\[download as pdf\]](#)

current for: v1.6.0

The General Preferences panel is shown below:



Other Preferences

- [General](#)
- [Scan Generate](#)
- [SEM Linescan](#)

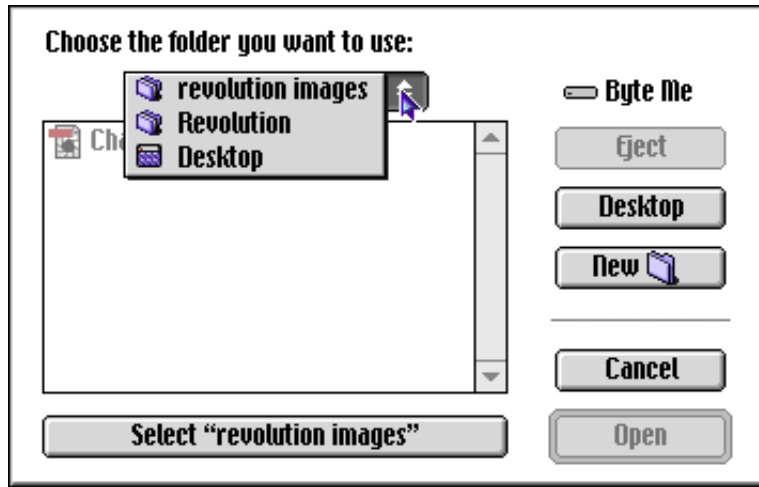
• *Info Text*

- **Facility.** Field to enter an optional facility name, which will appear as the top line of a three line entry below images when **Append to Images** is checked. The word "Facility" does not appear in the image, so this could be used as a general comment field if desired. The facility entry will appear only in images acquired after an entry is made, and cannot be edited in Revolution after the fact (however, it could of course be changed after the fact with any image editor).
- **Comments.** Field to enter an optional comment line, which will appear as the bottom line of a three line entry below images when **Append Below Images** is checked. The comments entry will appear only in images acquired after an entry is made, but it can be edited in Revolution after the fact. Edit the line by right-clicking on the acquired image and select **Edit Comments**
- **Append Below Image.** Controls the creation of a blank space below a preview or acquired image, in which can appear 3 lines of information: Line 1 is the facility, as given in the Facility field above. Line 2 is accelerating voltage and microscope magnification, if the additional checkboxes are selected. Line 3 is comments about the image, as given in the Comments field above.

• *Save Options*

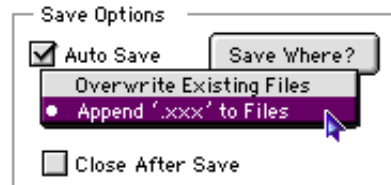
- **Auto Save.** When checked, the image acquisitions will be saved directly to disk without intervention of the operating system. When this box is unchecked, normal operating system services are used to save/dispose the image or map window. Each time Auto Save is checked, a window will open to select the save destination.
- **Save Where?** This button (unavailable unless AutoSave is checked) will open an operating system services window that allows you to browse and select a directory where your images will

be saved.



Navigate according to your operating system defaults until the desired directory is appropriately listed in the **Save Where?** window. Select the directory.

- **Close After Save.** Not available unless **AutoSave** is checked. When checked, the acquired image is immediately closed when the acquisition is finished.
- **Naming Options Menu.** Not available unless **AutoSave** is checked. The **Name** field in the [SEM Setup Panel](#) or the [SEM LineScan Prefs Panel](#) is used to name the associated preview screen window, acquisition screen window, and disk file. During AutoSave operation, this dual menu selection defines the disposition of those names (for x-ray maps, the element names are set via the ROI dialogs; see the [Xray Image Prefs Panel](#) for details).



File format extensions (e.g., jpg, tif, etc.) are automatically added to the file name.

- **Overwrite Existing Files.** Overwrites the file name. Off by default. Unless the name for each acquisition is changed, each acquisition will overwrite the previous image (of the same name) saved to disk. Be careful to understand the operation of this menu before selecting, or unanticipated results can occur. Using it will definitely keep the disk from filling up, but important images can easily be lost.
 - **Append ".xxx" To Files.** When selected (default), multiple images with the same names are saved to disk as "name_001," "name_002," and so on. The "_nnn" suffixes are appended starting with the very **first** image.
- **Use Prefix When Saving.** Not available unless **AutoSave** is checked. When checked, automatically adds the given prefix to the beginning of the name.
- **JPEG Quality**
 - Selector to determine degree of JPEG compression. Units are dimensionless and inversely proportional to compression. High quality (100) is lowest compression. Low quality (0) is highest compression.
 - **Miscellaneous Options**

- **Include Line Profile in Save.** When checked, the line profile overlay for either the [SEM image](#) or the [X-ray map](#) is burned into the image or map.
- **Printer DPI.** The user can specify an arbitrary **printer dpi** (dots per inch) value for acquired images. There is often confusion about the meaning of this value. In Revolution, **Printer DPI** is the number inserted into the X- and Y-Resolution Tags of a TIFF file. You must understand how your imaging program interprets the TIFF Resolution Tags to predict the effect on printed image size. Depending on the program that you use, the results may not be what you expect. In Revolution, knowing the pixel dimensions of the image or map and the printer dpi, one can determine how large the image or map will be when printed. Note that a 512x512 image on the computer screen will print out smaller than 2" x 2" on paper (512 pixels divided by 300 dpi).

The 4pi setting for **Printer DPI** is synonymous with **resolution** in the **Image Size** window in **Adobe Photoshop**. Note that further manipulation of the image in the same window (for example, changing resolution, image width and height, and the ruler units) can lead to unexpected results when printed. Consult your image application manuals for complete information on these image attributes.

Note **carefully** that *an image on screen has no printer dpi association until it is either saved or printed*. When saved as a TIFF image, the listed Printer DPI setting is saved in the appropriate X- and Y-Resolution tags. When printed from Revolution, the listed Printer DPI setting is used. So for example, consider saving a TIFF image at 300 dpi to disk. If then printed from Revolution, it will be printed at 300 dpi. If one then changes the dpi field to 150 and prints from Revolution again (without resaving), the value 150 will be used, even though the file saved to disk has dpi = 300.

- **Window Positioning Options**

- There are no window positioning options in 1.6.x as there [were in 1.5.6](#). The window positioning prefs were mainly important for x-ray mapping, and these have been superseded by a container paradigm in 1.6.x.